

## WISA WC FRAME 5 MF



### APPLICATION PURPOSE

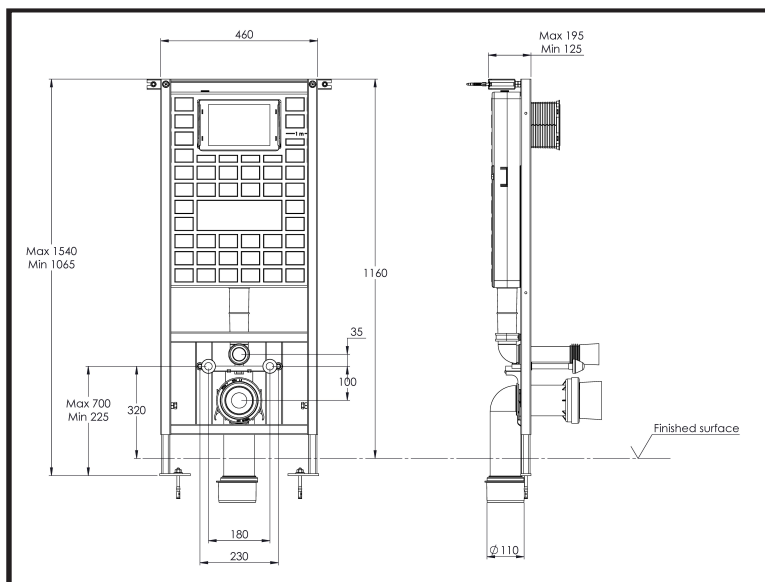
- Concealed cistern for dry processing
- For mounting in front of the wall and finishing with plasterboard
- For mounting behind an existing wall

### CHARACTERISTICS

- WC cistern with support frame
- Blue powder coated frame
- Adjustable feet (47 cm)
- Dual flush 3/6 L
- Insulated against condensation
- Quiet hydraulic float valve (3/8 Brass with Filter)
- Pre-installed stop valve
- Water connection 1/2"
- Wall fixation kit
- Sound insulation pad between wall & WC
- Front control
- Frame designed to carry max load of 400kg
- 10 years guarantee
- 25 years parts availability

### SCOPE OF DELIVERY

- WC connection kit
- Fixation materials
- Masonry aid
- Insulation Pad
- Discharge elbow PE 90 mm with reducer to 110 mm
- Mounting instructions



### TECHNICAL DATA

|                |                         |
|----------------|-------------------------|
| Colour         | blue powder coated      |
| Material frame | steel                   |
| Material tank  | PP                      |
| Dimensions     | 460 x 1160 x 125-195 mm |

### ARTICLE

|                  |               |
|------------------|---------------|
| WISA art. nr.    | 8050452852    |
| EAN nr.          | 8711778229334 |
| Units per box    | 1             |
| Units per pallet | 20            |